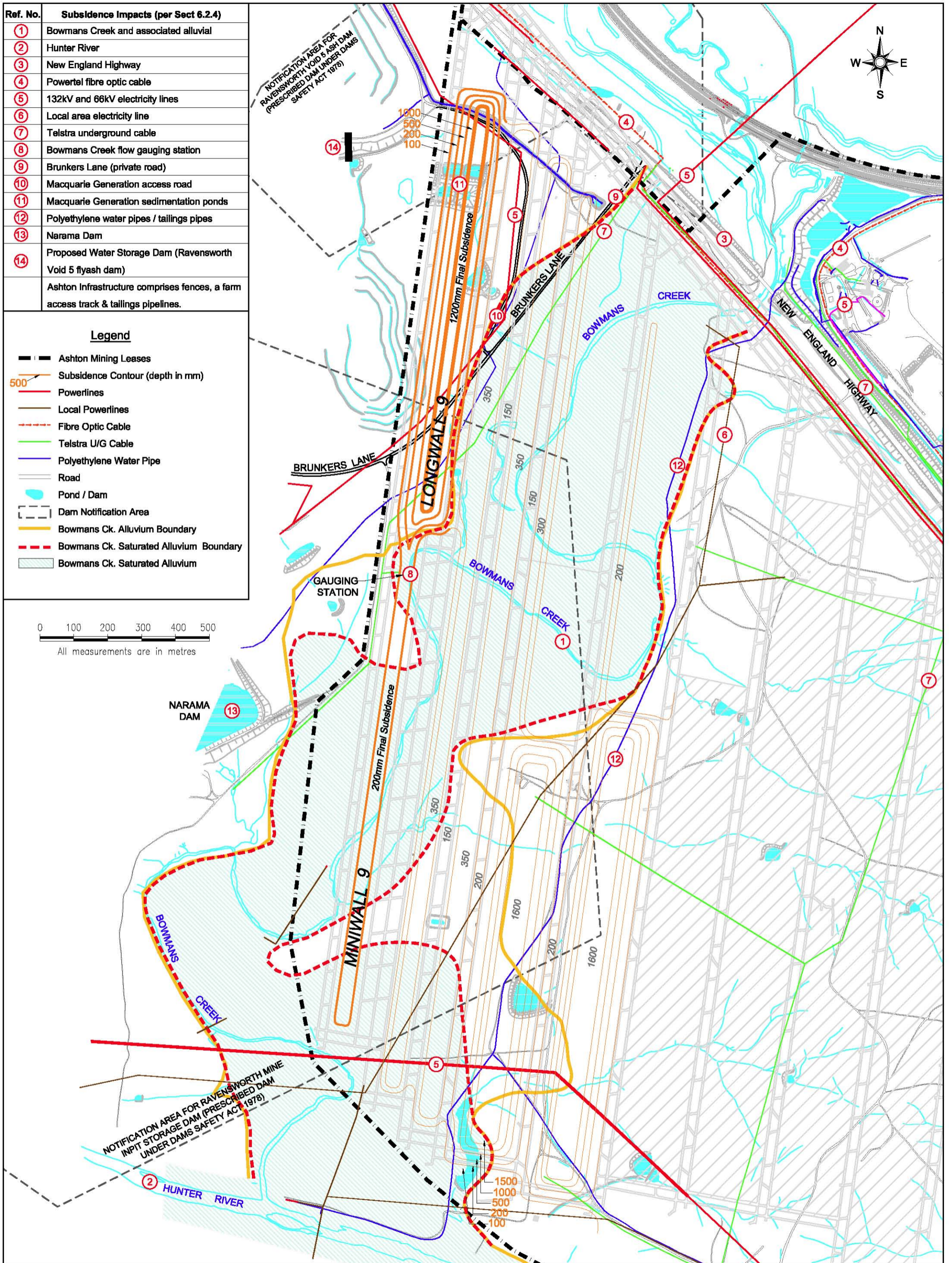


| Ref. No. | Subsidence Impacts (per Sect 6.2.4) |
|----------|---|
| ① | Bowmans Creek and associated alluvial |
| ② | Hunter River |
| ③ | New England Highway |
| ④ | Powertel fibre optic cable |
| ⑤ | 132kV and 66kV electricity lines |
| ⑥ | Local area electricity line |
| ⑦ | Telstra underground cable |
| ⑧ | Bowmans Creek flow gauging station |
| ⑨ | Brunkers Lane (private road) |
| ⑩ | Macquarie Generation access road |
| ⑪ | Macquarie Generation sedimentation ponds |
| ⑫ | Polyethylene water pipes / tailings pipes |
| ⑬ | Narama Dam |
| ⑭ | Proposed Water Storage Dam (Ravensworth Void 5 flyash dam) |
| | Ashton Infrastructure comprises fences, a farm access track & tailings pipelines. |

| Legend | |
|--------|---|
| | Ashton Mining Leases |
| | Subsidence Contour (depth in mm) |
| | Powerlines |
| | Local Powerlines |
| | Fibre Optic Cable |
| | Telstra U/G Cable |
| | Polyethylene Water Pipe |
| | Road |
| | Pond / Dam |
| | Dam Notification Area |
| | Bowmans Ck. Alluvium Boundary |
| | Bowmans Ck. Saturated Alluvium Boundary |
| | Bowmans Ck. Saturated Alluvium |

0 100 200 300 400 500
All measurements are in metres



AshtonCoal
PO Box 699 Singleton NSW 2330
Phone 61+ 02 6576 1111 Fax 61+ 02 6576 1122

ASHTON UNDERGROUND MINE
Figure 6a
Final Predicted Subsidence Contours

| | | | | | |
|------------------|----------------------|-------------|---------------|----------|-----------------------|
| Date 06/08/09 | Scale: 1:10000/A3 | Drawn NM | Checked PF | Approved | Drawing No. A-9346 |
| | | | | | Revision No. |
| | | | | | Sheet Size A3 |